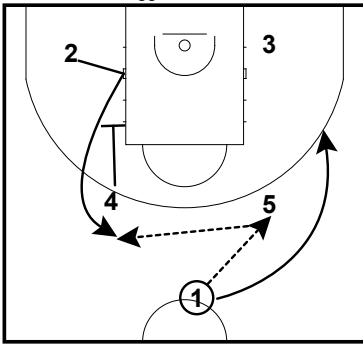
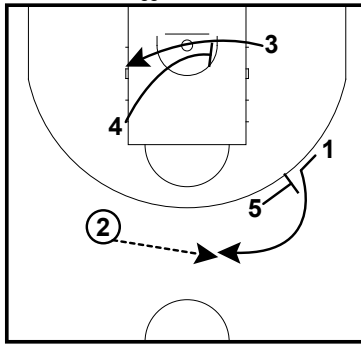


Obradoiro 2013 Set Offense Options

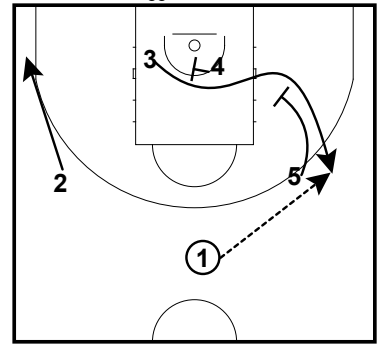
Set Offense Options
Staggered Screens



Set Offense Options
Staggered Screens

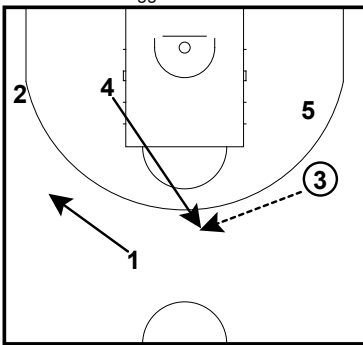


Set Offense Options
Staggered Screens

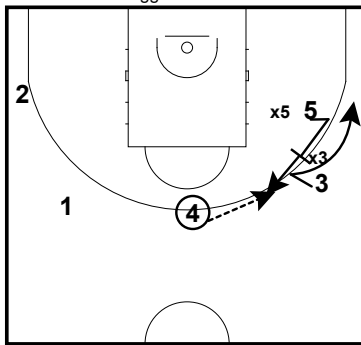


1) BI Escalonados para tiro

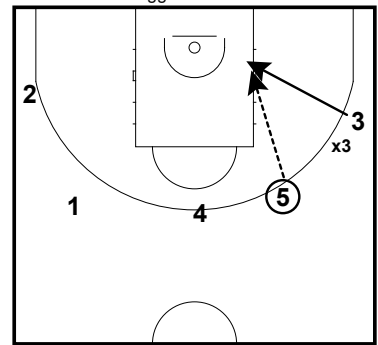
Set Offense Options
Staggered Screens



Set Offense Options
Staggered Screens

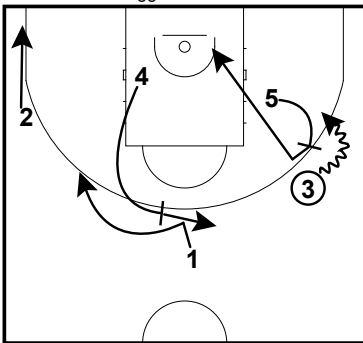


Set Offense Options
Staggered Screens

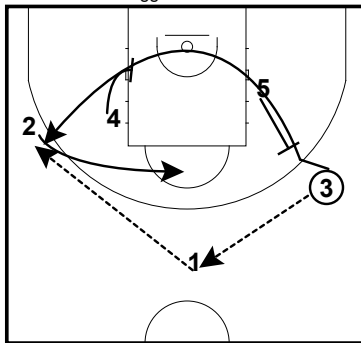


Continuidad A) Flare Screen+ lectura puerta atrás

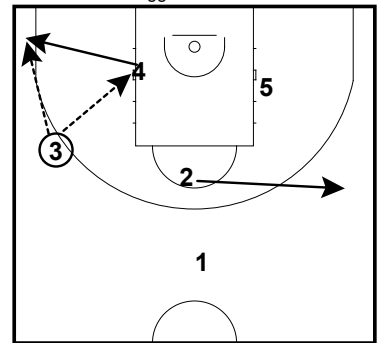
Set Offense Options
Staggered Screens



Set Offense Options
Staggered Screens



Set Offense Options
Staggered Screens

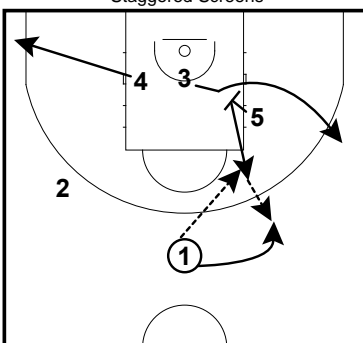


Continuidad B) BD Lateral+ BI Contención

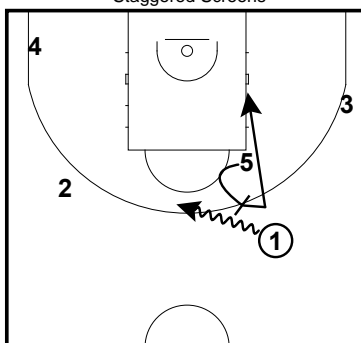
Continuidad C: BI Escalonados lado contrario

4 dentro si hay cambio o ventaja o fuera si X4 ayuda en salida de 3

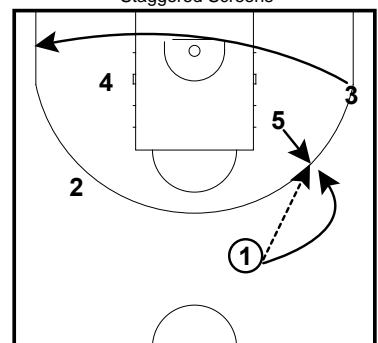
Set Offense Options
Staggered Screens



Set Offense Options
Staggered Screens



Set Offense Options
Staggered Screens

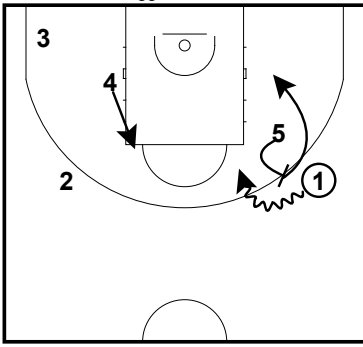


Continuidad D: Mano a mano + BD

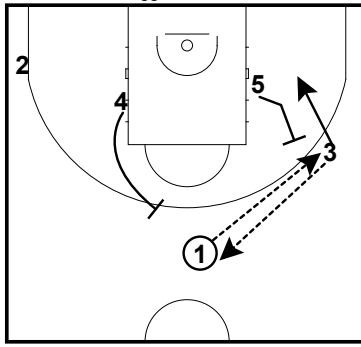
Continuidad E: 3 aclara y mano a mano+BD Lateral

Obradoiro 2013 Set Offense Options

Set Offense Options
Staggered Screens

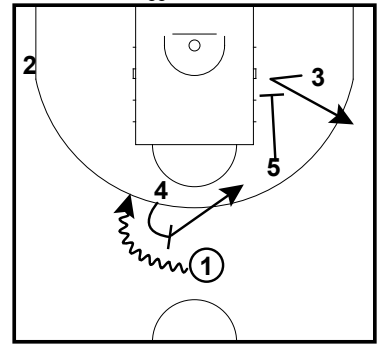


Set Offense Options
Staggered Screens



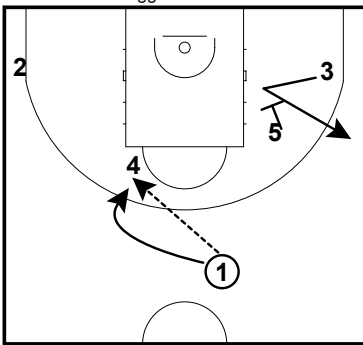
2) **BD Continuación abierta**

Set Offense Options
Staggered Screens



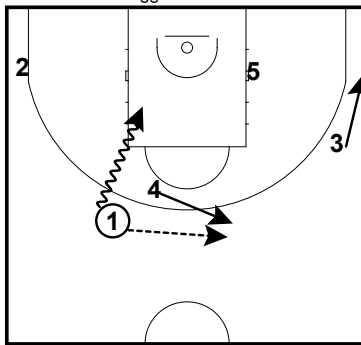
BD+ BI sobre tirador

Set Offense Options
Staggered Screens



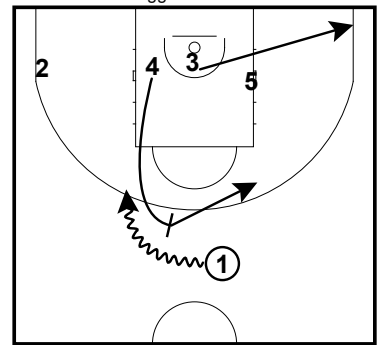
Igual con mano a mano

Set Offense Options
Staggered Screens



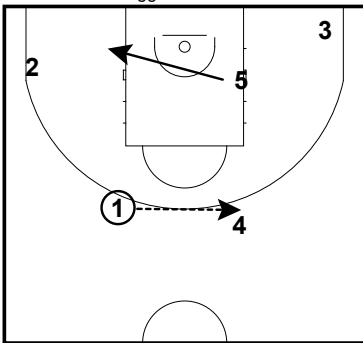
Pase a 4 o espacio para 1c1 (5 juega espacio en función de la decisión de 1)

Set Offense Options
Staggered Screens



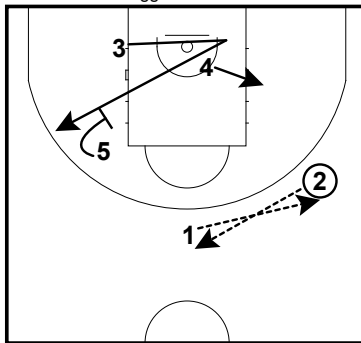
BD sin salida de BI de 3

Set Offense Options
Staggered Screens



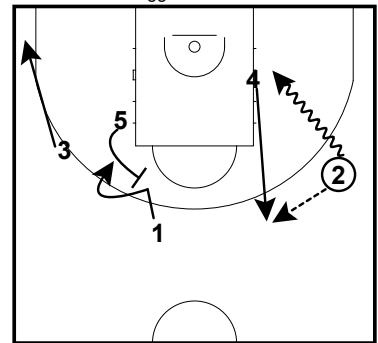
Tiro o 1c1 contra recuperación de 4

Set Offense Options
Staggered Screens



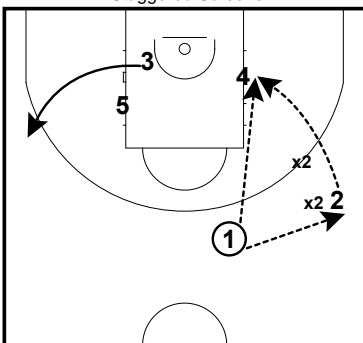
4) **Mismo lado** :1 devuelve pase a 2

Set Offense Options
Staggered Screens



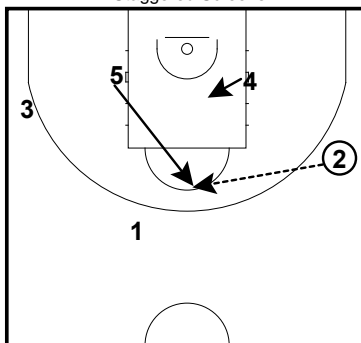
Continuidad A): 1c1 exterior o 1c1 o tiro de 4

Set Offense Options
Staggered Screens



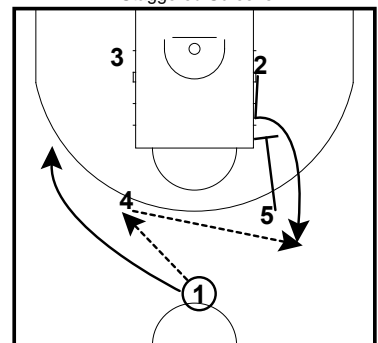
Continuidad B): interior a 4 desde 1 o 2

Set Offense Options
Staggered Screens



Continuidad C): otro interior sube a poste alto para alto-bajo, tiro o 1c1

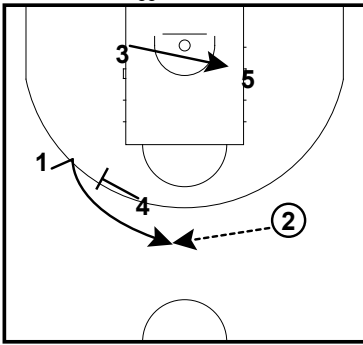
Set Offense Options
Staggered Screens



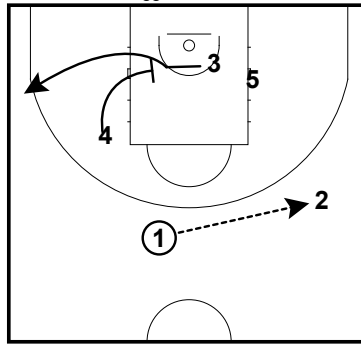
5) BI entre pivots: inicio con pase a 4

Obradoiro 2013 Set Offense Options

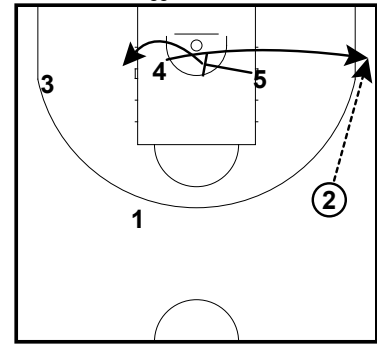
Set Offense Options
Staggered Screens



Set Offense Options
Staggered Screens

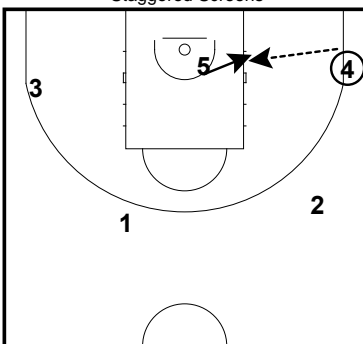


Set Offense Options
Staggered Screens



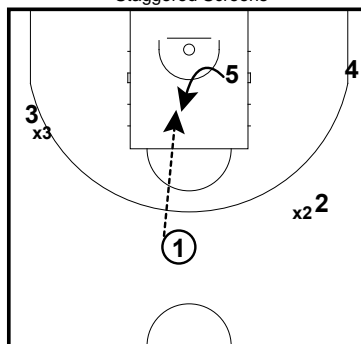
Continuidad A): tiro o 1c1 exterior de 4. 5 poste bajo lado contrario

Set Offense Options
Staggered Screens



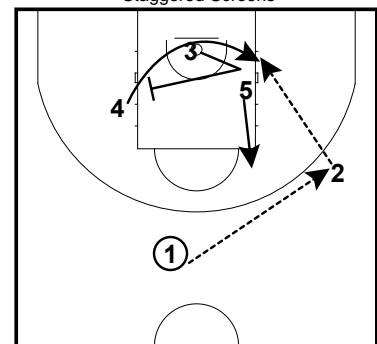
Continuidad B): pase dentro si cambio o ventaja

Set Offense Options
Staggered Screens



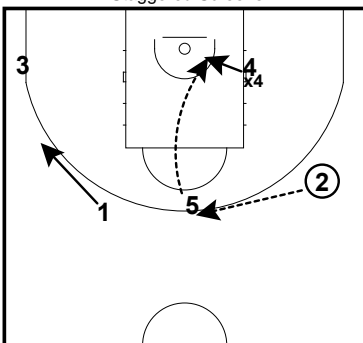
Continuidad C): pase a 5 dentro si exteriores presionan líneas de pase

Set Offense Options
Staggered Screens



6) Tirador BI por fondo para 4

Set Offense Options
Staggered Screens



Alto-bajo si X4 defiende por delante